

Countryside  
Service



## Making Plans for Nature: Bluebank Pools and Williamthorpe LNRs

*Gemma Gregory*

*Derbyshire County Council  
Countryside Service*

*Lowland Derbyshire  
Biodiversity Partnership  
Forum 2011*

## The Sites: Bluebank Pools LNR



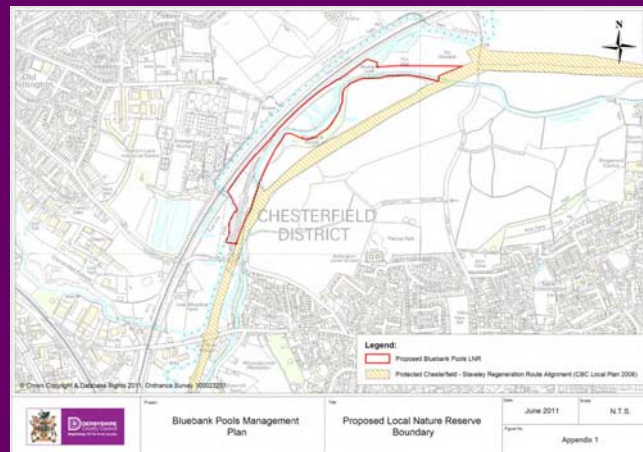
## The Sites: Williamthorpe LNR



## First step: How much should we include?

- Boundary decisions – where to draw the line?
- Do we own all of the land?
- Are there any mitigating factors – future schemes?

## First step: How much should we include?



## Second step: The dreaded Management Plans

Using the GreenSpace management plan model:

WHERE ARE WE NOW?

WHERE DO WE WANT TO GET TO?

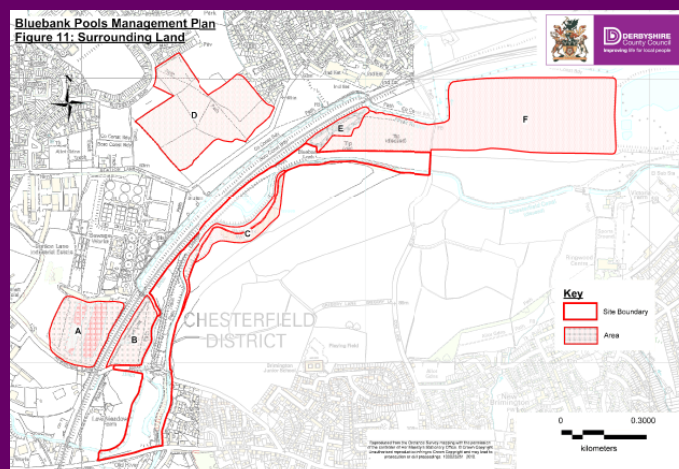
HOW WILL WE GET THERE?

HOW WILL WE KNOW WHEN WE HAVE ARRIVED?

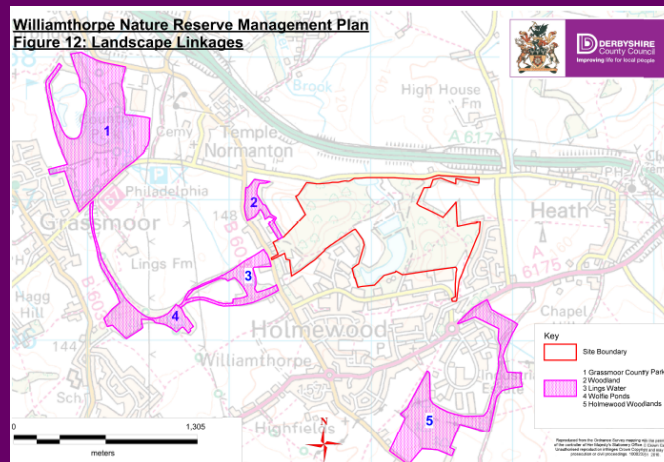
## Third step: Looking wider still

- Does anyone else in the wider landscape have land of interest to our plan?
- Can this land contribute to wider landscape-scale benefits and linkages for wildlife?
- Who are they?
- Are they interested in managing their land for wildlife?

## Third step: Looking wider still



## Third step: Looking wider still



## Fourth step: Resourcing the improvements

- Countryside Stewardship Scheme
- Higher Level Stewardship Scheme
  - Programme of works for entire North Area sites portfolio
  - Working towards whole-Service scheme
- Local Nature Reserve Declaration
  - Lever for grant funding?

## HLS-funded biodiversity improvements



## Interpretation & Promotion Art Attack Event @ Tapton Lock



# Credits

---

## **DCC Countryside Service site staff:**

Bluebank Pools LNR:  
Dominic Hodgson

Williamthorpe LNR:  
Steve Barringham  
Alan Heeley

## **Management Plan authors:**

Wildscapes Ecological Consultants